

# AREMO-2173E

19" 2U industrial rack-mount chassis



## FEATURES

- One slim CD-ROM and two hot-swap 3.5" HDD (IDE or SATA)
- Two USB ports on the front panel
- Two 8 cm ball-bearing cooling fans for better ventilation
- One power On/Off switch with protection cap and one touch free reset for secure access

## ORDERING GUIDE

- **AREMO-2173E-06V4-330X**  
19" 2U rack-mount chassis with vertical 6-slot (4xPCI) PICMG backplane and 330W ATX power supply
- **AREMO-2173E-06V4-D3501P**  
19" 2U rack-mount chassis with vertical 6-slot (4xPCI) PICMG backplane and 350W ATX, Active PFC power supply
- **AREMO-2173ER-06V4-3002X**  
19" 2U rack-mount chassis with vertical 6-slot (4xPCI) PICMG backplane and 300W Redundant power supply

## GENERAL

Construction	Heavy-duty steel
Drive Bay	External: Slim type CD-ROM x1, Hot-swap 3.5" HDD x2
Air Filter	One internal replaceable air filter
Cooling Fan	Two 8 cm ball-bearing fans
Indicator	HDD x1+ Power on/off x1
Switch	Power on/off x1 (with a protection cap) x1, System reset x1
Speaker	One 8Ω speaker
Connector	Two USB ports equipped on the front panel
Standard Color	Silver, Beige, Black
Dimension	482(W) x 441.6(D) x 88.4(H) mm; 19"(W) x 17.4"(D) x 3.5"(H)
Weight	Net: 11.0 kg (23.1 lb); Gross: 12.0 kg (25.3 lb)
Backplane	PBP-06V4: Vertical 6-slot (4xPCI) PICMG backplane PBP-06V: Vertical 6-slot ISA backplane

## POWER SUPPLY

### ORION-D3501P optional

Input Voltage	90V ~ 264V AC, full range
Input Frequency	47 ~ 63 Hz
Input Current	6A@90V
Efficiency	> 68%
Holdup Time	17 ms. at full load@25°C
Over Voltage Protection	+5V@7V; +3.3V@4.3V; +12V@15.6V
Over Power/Load Protection	Outprint power over to 110%~140%
MTBF	75,145 hrs
EMI & Safety Approval	UL, TUV, CE, FCC, CB, CSA, SEMKO, FIMKO, NEMCO, DIMCO
Temperature/Humidity	Operating: 0 ~ 50°C, 20 ~ 85%RH Storage: -40 ~ 70°C, 10 ~ 90%RH
Dimension (WxDxH)	150x140x86 mm; 5.9"x5.5"x3.4"

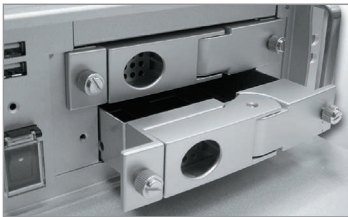
## ENVIRONMENT

Operating Temperature Range	0 to +50°C
Storage Temperature Range	-40 to +70°C
Relative Humidity	5% to 95%, non-condensing
Vibration	5~7 Hz: 0.5" double amplitude displacement 7~2000 Hz: 1.5g acceleration

# AREMO-2173E 19" 2U industrial rack-mount chassis

FEATURE	BENEFITS
<ul style="list-style-type: none"> <li>350W PFC power supply</li> </ul>	<ul style="list-style-type: none"> <li>Sufficient power source for Intel® Pentium® 4 processor</li> </ul>
<ul style="list-style-type: none"> <li>Two 8cm high speed fans</li> </ul>	<ul style="list-style-type: none"> <li>Better ventilation to enhance system reliability</li> </ul>
<ul style="list-style-type: none"> <li>Two hot-swappable HDD drive bays</li> </ul>	<ul style="list-style-type: none"> <li>Easy to access HDD drives</li> </ul>
<ul style="list-style-type: none"> <li>Four PCI expansion slots</li> </ul>	<ul style="list-style-type: none"> <li>For system function expansion</li> </ul>
<ul style="list-style-type: none"> <li>Card cage structure</li> </ul>	<ul style="list-style-type: none"> <li>Install PICMG and add-on cards more easily</li> </ul>
<ul style="list-style-type: none"> <li>Front replaceable air filters</li> </ul>	<ul style="list-style-type: none"> <li>Good for easy cleaning</li> </ul>

## WHAT'S NEW



**Two Hot-Swappable HDD Drive Bays**  
Convenient to access HDD drives



**Hot-Swappable HDD Drives**  
Easy to access HDD drives



**Front Replaceable Air Filters**  
Convenient to change air filters when needed

## ENGINEERING DRAWING

