

PCOM-B632VG

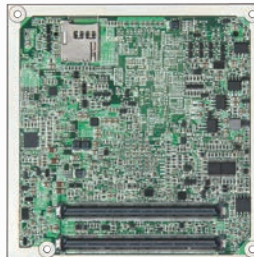


Implementation of applications used for national security and cyber warfare require high intelligence systems capable of operating in remote conditions and under stringent conditions, more so than industrial computers



Intel® Atom™ E3800 series based Type VI COM Express® module with DDR3L SDRAM, VGA, eDP, HDMI, Gigabit Ethernet and 3Gbps SATA.

PCOM-B632VG is designed to offer good EMC protection by latest mobile platform, SoC(System-On-Chip) integrated remote technology and embedded controller. Also PCOM-B632VG provides high performance for various display, eDP and HDMI.



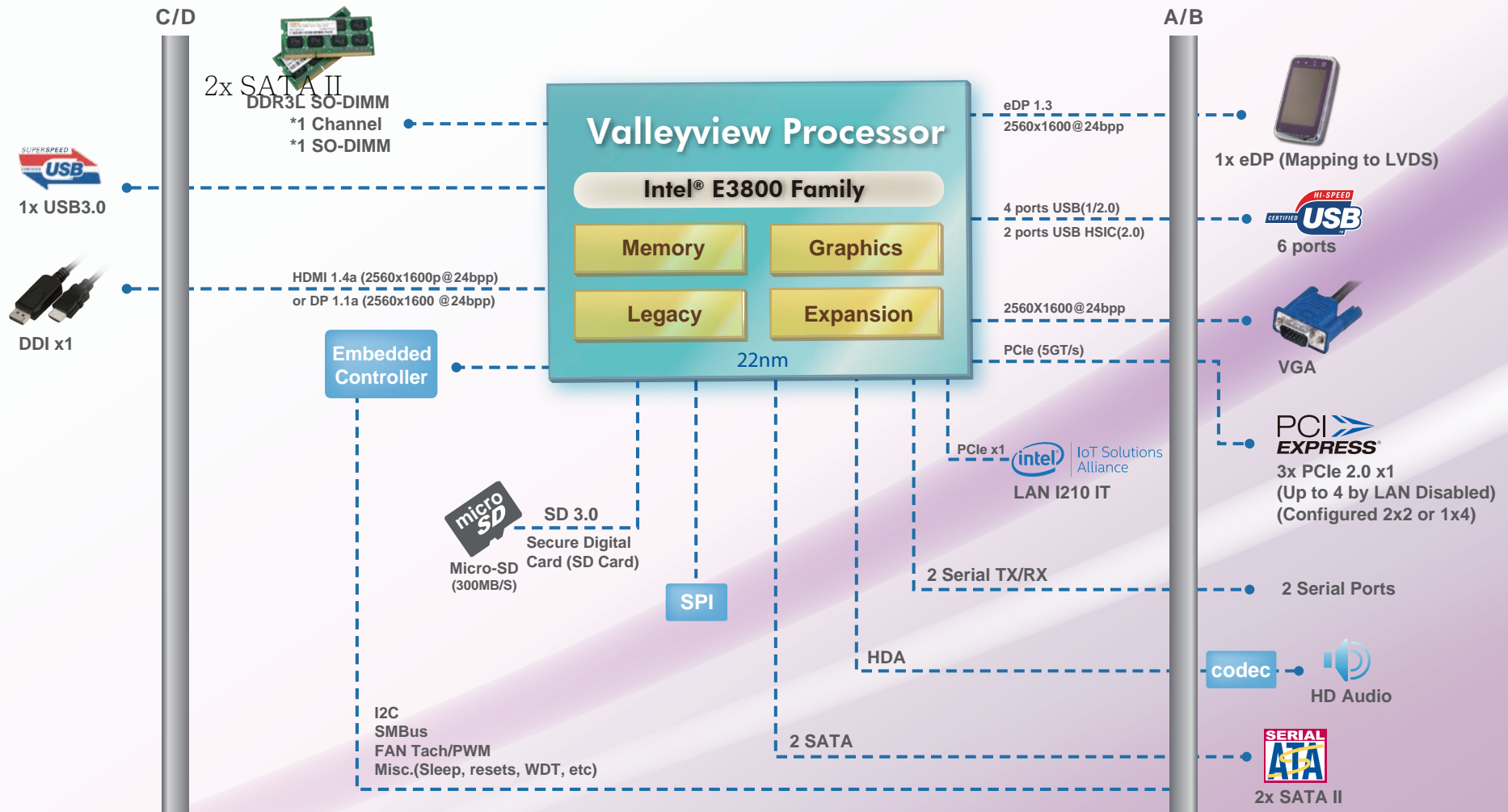
The PCOM-B632VG COM Express® module has been enhanced by Portwell in response to market demand for an even lower power platform to take advantage of the Intel® Atom™ processor's already compact design. In fact, since its initial inception, Portwell's expanding Intel Atom processor-based COM Express® product portfolio has now grown to include industrial temperature range support. Portwell's versatile COM Express® modules adapt to these changes by enabling designers to partition commodity host-processors from proprietary baseboards, thereby minimizing current and future design risks during the initial phase of development.

FEATURES

- Latest Intel® Valleyview embedded processor provides cost effective solutions with low power and quad core processor technology
- Supports up to four PCIe lanes, four x 1 lanes can be configured to one x 4 lane
- Supports one DDR3L 1066/1333 MT/s SDRAM, up to 4GB
- Supports one 1x USB 3.0

ORDERING GUIDE

AB1-3A35	(R).PCOM-B632-E3825, ATOM™ E3825 Dual Core with MOQ
AB1-3A34	(R).PCOM-B632-E3826, ATOM™ E3826 Dual Core with MOQ
AB1-3A33	(R).PCOM-B632-E3827, ATOM™ E3827 Dual Core
AB1-3A36	(R).PCOM-B632-E3845, ATOM™ E3845 QUAD Core
AB1-3A40	(R).PCOM-B632-E3815, ATOM™ E3845 Uni Core



Processor Core

- ◆ BayTrail-I Core™ (22nm) E3845, E3827, E3826 and E3825 for multi-core; E3815 for Uni-core SKUs
- ◆ Up to 2M, Shared Last Level Cache
- ◆ SMT: 4 threads/core

Highlights

- ◆ Integrated micro-SD on module
- ◆ Integrated PET (Portwell Engineering Toolkit) GUI
- ◆ 1x USB 3.0 port support
- ◆ Up to 4x PCI-Express x1 which support 1x4, 4x1 configurations

Memory

- ◆ DDR3L 1067/1333MT/s
- ◆ 1 Memory Channel
- ◆ Up to 17GB/s for Industry SKU

Platform Thermal Design Power

	E3845 4C 1.9GHz	E3827 2C 1.75GHz	E3815 1C 1.46GHz
CPU			
Watt	10W	8W	5W