

PCOM-C605

COM Express® Type VI Carrier, PCOM-C605 provides the fast compatibility evaluation process with PCOM Modules. Mini-ITX form factor with PEG and CFEX, two GbE Ethernet ports



Mini-ITX Form Factor Evaluation Carrier Board for both Type VI Module

Portwell PCOM-C605 is designed with Mini-ITX form factor with COM Express® Type VI row connectors, suitable for evaluation testing of Portwell's Type VI COM Express® modules on PCI-E, PEG, VGA/LVDS, USB, SATA, and CFEX with SATA and SPI interface. We also provide carrier board design guides for your own carrier board development reference.

This new version of the PCOM-C605 Reference Carrier Board is 100% compatible with the recently released PICMG COM Express® Carrier Design Guide and provides a full complement of I/O interfaces, debugging tools, and peripheral devices such as Super I/O and audio code that may be required on the custom carrier board. The full schematics and mechanical drawings of the PCOM-C605 are available for testing to allow customers to immediately begin their own carrier board design effort. A complete Starter Kit is also available, which includes the COM Express® module of choice, the PCOM-C605 reference carrier board, thermal solution, documentation.

FEATURES

- COM Express® carrier board is compatible with the Portwell Type VI COM Express® modules
- Mini-ITX form factor meets most standard mounting spaces and provides more expansions slots

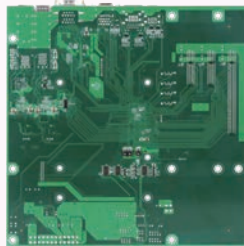
ORDERING GUIDE

AB1-3998 (R).PCOM-C605. Support TYPE VI.
Mini-ITX Form Factor.COM Express Carrier Board



PCOM-C700

PCOM-C700 Carrier supports COM Express® Rev3.0 Type 7 specification, offering high bandwidth 10GbE and NC-SI interfaces, PCI Express expanded up to 32 lanes



Portwell's 1st COM Express® Rev3.0 Type 7 Carrier which supports four 10GbE optical and fiber phys, NC-SI interface and up to 32 PCI Express lanes.

Portwell PCOM-C700 is designed with Micro-ATX form factor with COM Express® Type VII row connectors; it's suitable for evaluation testing of Portwell's Type 7 COM Express® modules with USB 3.0, PCI-Express, SATA, TPM and 10 Gigabit Ethernet support. Portwell is able to provide carrier board design guide for customer to design their carrier board as a reference.

PCOM-C700 is the first carrier board which can support 10 Gigabit Ethernet function. This can shorten customer's carrier board developing time and make the development quickly and easily. The PCOM-C700 provides COM Express® Type 7 support in addition to suit wide range of device connectivity for prototype and flexibility.

FEATURES

- COM Express® Rev3.0 Type 7 Carrier
- Micro-ATX form factor
- 2x 10 Gigabit Ethernet ports & 1 Gigabit Ethernet port

ORDERING GUIDE

Contact us

(R).PCOM-C700. TYPE VII. Micro-ATX Form Factor. COM Express® Carrier Board

