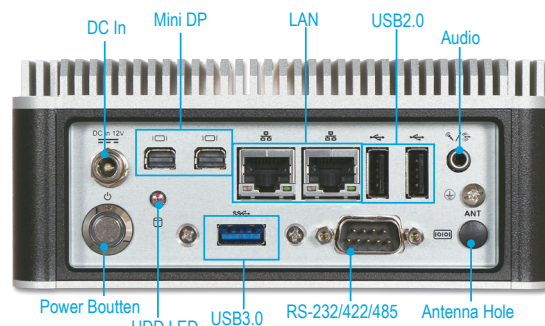
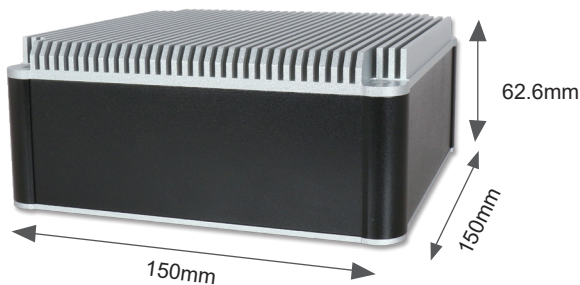




# WEBS-21A0

Embedded Compact Fan-less System with Intel® Broadwell-U Core™ i SoC based NANO-ITX Board



The WEBS-21A0 builds on Intel® Broadwell-U Core™ i SoC and takes advantages of Intel® Core™ mobile technologies. that can support superior Dual-Core processing power and capability. Support two Gigabit Ethernet ports and one Half-Size Mini PCIe. The WEBS-21A0 is an ideal platform which with high performance for fan-less applications in harsh environment, such as POS, kiosk, digital signage, transportation and automation.

## FEATURES

- Fan-less and cable-less & small and exquisite design
- Single 204-pin SODIMM supports DDR3L up to 8GB
- Intel® Broadwell-U Core™ i SoC based platform
- 1x 2.5" SATA HDD/SSD, 1x mSATA
- 1x Half-size Mini-PCIe socket (USB+PCIe x1 signal)
- 1x Antenna hole for WiFi, 3G or GPS module to use
- OP Vibration: 5Grms/10~500Hz
- OP Shock: 50G, 11msec
- IP40 Rating

## ORDERING GUIDE

AS5-3442	(R).WEBS-21A0.NANO-ITX system.
----------	--------------------------------

## System

M/B	NANO-6050
System Chipset	Intel® Broadwell-U Core™ i SoC
CPU	Intel® Core™ i5-5350U/ i3-5010U Processors up to 2.2G (15W) in FCBGA1168 package
BIOS	AMI UEFI BIOS (SPI ROM)
Memory	Single 204-pin SODIMM sockets supports DDR3L 1333/1600 MT/s SDRAM up to 8GB
Storage	1x 2.5" SATA HDD/SSD, 1x mSATA
Watchdog Timer	Programmable via S/W from 1 sec. to 255 sec.
H/W Status Monitor	Temperature (CPU & System) Voltage (CPU Vcore, 12V, 5V, 3.3V, RAM)
Expansion	1x Half-size Mini-PCIe socket

## External I/O

Serial Port	1x RS-232/422/485 (Selected by BIOS)
Display	2x Mini DP
USB	1x USB3.0, 2x USB2.0 (Optional kit: additional 2x USB3.0)
Audio	Audio Combo Jack Line-out /Mic-In (ALC892)
Ethernet	2x Gigabit Ethernet (Intel® I218AT)
Other	1x Antenna hole for WiFi, 3G or GPS module

## Power Supply Unit

Power Input	DC 12V
-------------	--------

## Environmental

Operation Temperature	0°C ~ 50°C
Storage Temperature	-20°C ~ 85°C
Relative Humidity	95%@40°C, non-condensing
Operation Vibration	5Grms/10-500Hz, IEC 60068-2-6
Operation Shock	50G, 11 msec, IEC 60068-2-27

## Mechanical

Dimension	150(W) x 150(D) x 62.6(H) mm; 5.9"(W) x 2.5"(D) x 2.1"(H)
Weight	2 Kg
Mounting	Wall, Panel, and DIN Rail mounting

