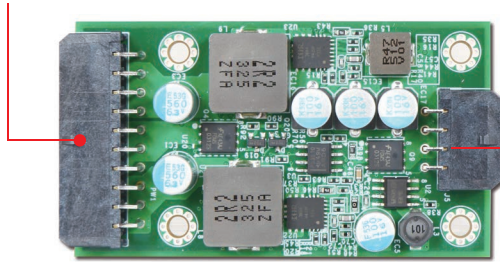


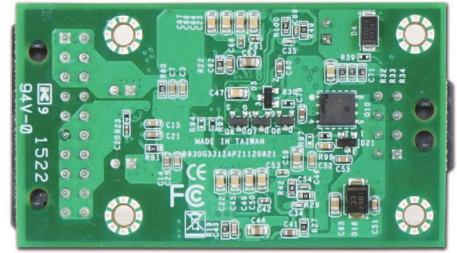
GADIWA-B1120

120W DC/DC 12V Input/ATX output,
Board Type Converter

Main / Mini-Fit 20 pin
output power connector



12V / Mini-Fit 8 pin
input power connector



GADIWA-B1120 is a DC to DC 12V input board type converter. It normally support continuous 120 Watts and peak 160 Watts.

GADIWA-B1120 can save more space, less than 1U width, and cost. It's not only capability for fan-less system but also suitability for different applications. Besides, the converter is made and tested by automatic production line; therefore, it can provide high quality and better performance.

FEATURES

- 12V DC/input, plug into the ATX connector with board output
- Compact and user-friendly design for installation and maintenance
- Fan-less design for mission-critical application
- Small size for 1U or higher system to save space
- -40°C to 75°C wide temperature support

SPECIFICATION

Input Voltage	12V (+5%/-4%)
Output	120Watts/ 160Watts peak
Efficiency	>90% @ 12V
MTBF	1,226,530hrs @40°C, 353,098hrs @75°C
EMI & Safety Approval	CE, FCC
Input Connector	Mini-Fit 8 pin (P/N: B6902040)
Output Connector	Mini-Fit 20 pin (P/N: B6902071)
Dimension (WxDxH)	38 x 68 x 12.5 mm
Operation Temperature	-40°C ~ 75°C

CHARACTERISTICS

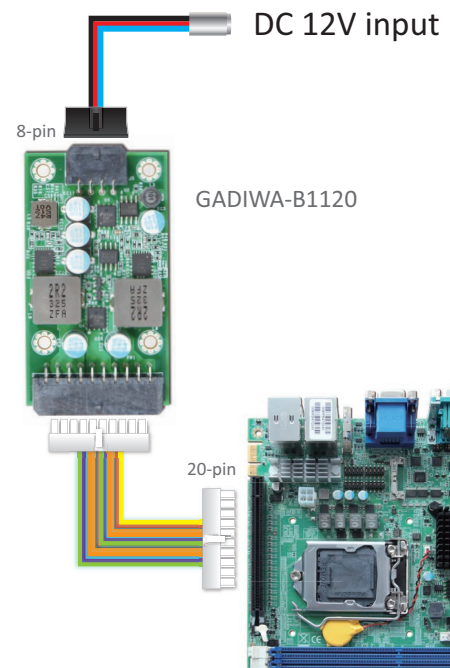
Output Voltage	Load Regulation	Cross Regulation
+12V	0~6A	6A
+5V	0~6A	6A
+3.3V	0~6A	6A
+5Vsb	0~2A	1A
-12V	0~0.1A	0.1A

ORDERING GUIDE

- GADIWA-B1120
120W DC/DC 12V/input.ATX/output.Wide Temperature.Board Type Converter



INSTALLING DEMONSTRATION



MECHANICAL DRAWING

