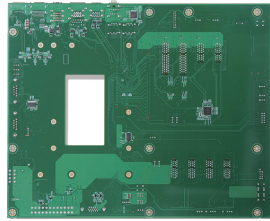
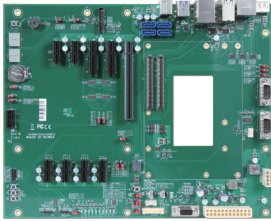


PCOM-C60B

PCOM-C60B is ATX Form Factor Evaluation Carrier Board for COM Express® Revision 3.0 Type VI Module. PCOM-C60B follows standard COM Express 2.0 carrier board specification



FEATURES

- ATX function evaluation carrier board
- Support 4x USB 3.1, 8x USB 2.0, 4x SATA III ports
- Support multiple display(DP, VGA, LVDS)



Portwell PCOM-C60B is designed with ATX form factor with COM Express Type VI row connectors, suitable for evaluation testing of Portwell's Type VI COM Express modules on PCIe, PEG, VGA/DP/LVDSI, USB and SATA interface.

General

Product	PCOM-C60B
Form Factor	ATX Form Factor (305 X 244mm)
Processor	Depends on Module
Core	
Freq.	
Turbo	
Cache	
Processor Graphics	
Graphics Base Frequency	
Graphics Max Dynamic Frequency	
HW Encoding	
HW Decoding	
HW Acceleration	
Processor TDP	
BIOS	
ECC Memory Supported	
Memory	

I/O Interface

SATA	4x SATA III		
USB	4x USB 3.1 Gen2 (Port 0~3) 8x USB 2.0 (Port 0~7)		
Ethernet	2 x GbE		
Serial I/O	GPIO	8 bit GPIO	
	I ² C	base on module design	
	SMBus	base on module design	
	UART	2x DB9 connector	
PEG	1x PCIe x16 (PCIe Gen3)		
PCI Express	8x PCIe Gen3 x1 (including 2x PCIe x4 slot)		
Display	Default	Options	Resolution
	VGA	VGA	Depends on module
		DDI2	
	LVDS	eDP	
DDI-DP	24bit dual channel LVDS DP1.2		
Security	N/A		

MECHANICAL & ENVIRONMENT

Dimension	305 X 244mm
Power DC IN	Support ATX power supply
Storage Temperature	-40°C to 80°C
Operation Temperature	-40°C to 80°C
Certification	Contact us
MTBF	Contact us
Vibration	Contact us
OS	Depends on Module

ORDERING GUIDE

Product	Ordering P/N	Status
PCOM-C60B	AB1-3G22Z	Contact us

BLOCK DIAGRAM

PCOM-C60B

COM Express Type 6
Carrier Board

-40 ~ +85° C

