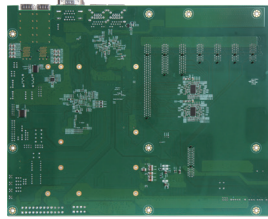
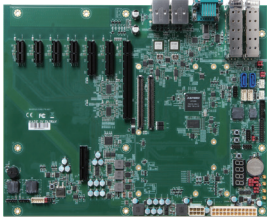


# PCOM-C701

ATX Form Factor Evaluation Carrier Board for COM Express Revision 3.0 Type VII Module with 4x 10GbE Support with Inphi CS4227 PHY



## FEATURES

- Support both AT and ATX mode
- 10G PHY: Inphi CS4227
- 1x GbE, 4x 10GbE SFP+
- 32 PCIe Lanes, 2 SATA III, 4 USB 3.0, 4 USB 2.0



Portwell PCOM-C701 is designed with ATX form factor with COM Express Type VII row connectors; it's suitable for evaluation testing of Portwell's Type VII COM Express modules with 4x USB 3.0, 32x PCIe lanes, 4x 10 Gigabit Ethernet, and BMC AST2500 support. Portwell is able to provide carrier board design guide for customer to design their carrier board as a reference. This can shorten customer's carrier board developing time and make the development quick and easy. The PCOM-C701 provides COM Express Type VII support in addition to fulfill wide range of device connectivity for prototype and flexibility .

## General

Product	PCOM-C701
Form Factor	ATX Form Factor (305 X 244mm)
Processor	Depends on module
Core	
Freq.	
Turbo	
Cache	
Processor Graphics	
Graphics Base Frequency	
Graphics Max Dynamic Frequency	
HW Encoding	
HW Decoding	
HW Acceleration	
Processor TDP	
BIOS	
ECC Memory Supported	
Memory	

## I/O Interface

SATA	2x SATA III (Port 0/1)	
USB	4x USB 3.0 (Port 0~3) 4x USB 2.0 (Port 0~3)	
Ethernet	1x GbE, 4x 10GbE SFP+	
Serial I/O	GPIO	8 bit GPIO (4 in, 4 out)
	I <sup>2</sup> C	1
	SMBus	1
	UART	2
PCI Express	1x PCIe Gen3 x16 3x PCIe Gen3 x4 4x PCIe Gen3 x1	
Display	Unavailable in Type7	
Security	N/A	

## MECHANICAL & ENVIRONMENT

Dimension	305 X 244mm
Power DC IN	Single Power: +12V DC PSU connector available AT/ATX mode
Storage Temperature	-40°C to 85°C
Operation Temperature	-40°C to 85°C 0°C to 70°C for BMC and 10G
Certification	Contact us
MTBF	Contact us
Vibration	Contact us
OS	Depends on Module

## ORDERING GUIDE

Product	Ordering P/N	Status
PCOM-C701	AB1-3J61Z	Available

## BLOCK DIAGRAM

### PCOM-C701

ZR1

COM Express Type 7  
Carrier Board

AT/ATX Form  
Factor

-40 ~ +80° C  
0 ~ +70° C (BMC, 10G)

