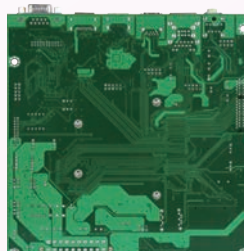


PQ7- C201

Automation could be described as an increase in productivity, and/or quality beyond that human labor levels. With the PQ7-C201, the greater PCIe interface enables greater motor control and its UART presence allows for a comport for Legacy components



Mini-ITX Form Factor Carrier Board for Qseven® Module with Triple Displays and One GbE

Portwell's PQ7-C201 is designed with Qseven® 230pin card edge MXM connector, and support Portwell's Qseven® modules for initial evaluation testing on PCIe x4, LVDS, DP, HDMI, SATA, USB, LAN, AUDIO, SDIO, LPC function, etc.

PQ7-C201 offers rich I/O ports for expansion demand, also simultaneously supports SATA and SD card functions. Furthermore, Portwell can provide carrier board design guides for your own carrier board development reference to shorten developing stage.

FEATURES

- Qseven® carrier board is compatible with Portwell Qseven® modules
- Mini-ITX form factor for embedded applications
- 1x GbE Port
- 2x SATA Ports and 1x SD Socket
- 1x PCIe x4 expansion slot
- DP, HDMI, and LVDS support

ORDERING GUIDE

AB1-3B45Z	PQ7-C201.Mini-ITX QSeven Carrier Board
-----------	--



IoT Solutions Alliance