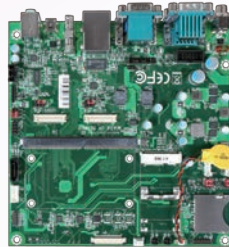


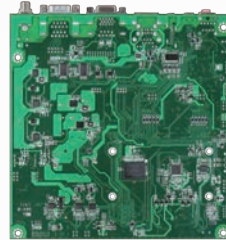
PSMC-C300ARM

The pin-out of PSMC-C300ARM is optimized for the features specifically common to ARM® processors. The modular approach allows scalability, fast time to market and upgradability while still maintaining low power and cost performance



Mini-ITX Form Factor Carrier Board for SMARC Module with GbE, HDMI, VGA and dual LVDS

Portwell's PSMC-C300ARM carrier board is designed with SMARC 314 pins card edge MXM connector, suitable for initial evaluation testing of PSMC-M640F and PSMC-M310T. It can help save valuable customers' precious development time to market because the following effort has been made by Portwell.



- Porting Ready as Development Kit to Serve Prior Evaluation Purpose
 - OS (Linux 3.x / Android 4.x)
 - BSP Ready
 - Middleware Qt5 Ready
- Saving Development Time at least 6~8 weeks

FEATURES

- Mini-ITX form factor for embedded applications
- Multiple Display interfaces
- MIPI (DSI, CSI) interface for camera is reserved

ORDERING GUIDE

Contact us PSMC-C300ARM, Mini-ITX, SMARC Carrier Board



IoT Solutions Alliance



PSMC-C300ARM

MXMIII Connector Gold Finger

