



Portwell

POS

Enrich Your Deals



Point of Sale System

hotels, stadiums and casinos, as well as almost all POS systems is not only operated by salesman, information about the shop, products, etc. from Moreover, through the multimedia displayed by



In Fast Food people can get today's special to speed up ordering. It can also show new toy information to attract children for making good selling.



+



+

More Possibility



In Coffee Shop, the traditional board can be replaced by E-Menu (HDMI) showing the product names and photos at the same time.

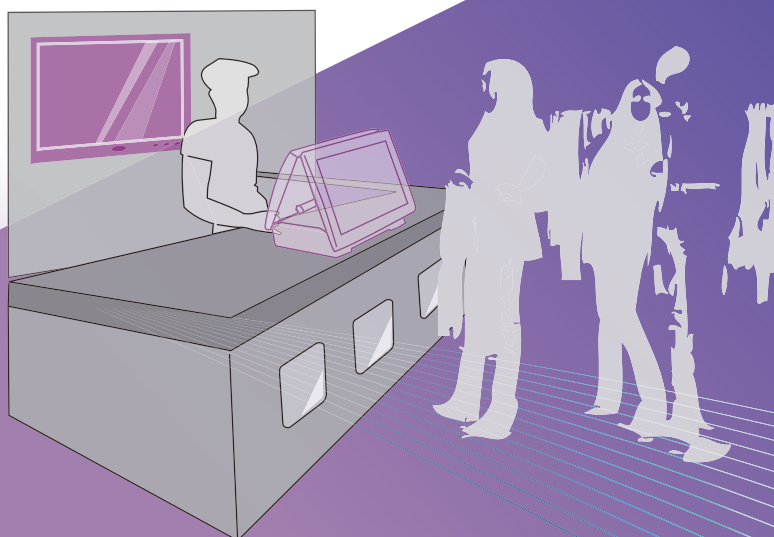
ms are used in supermarkets, restaurants,
any type of retail establishment.

but also can used by customers. They can get
the other screen.

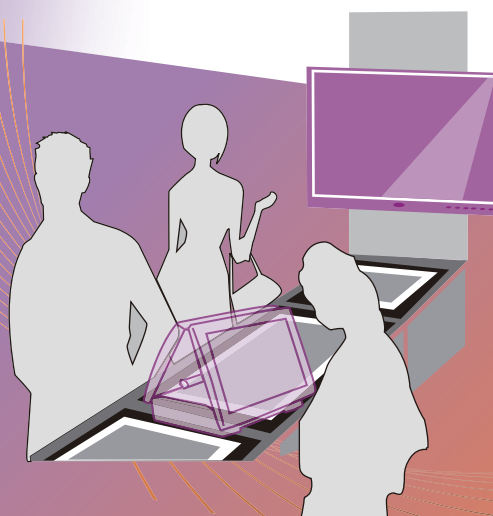
HDMI, the POS system can do the more service.



with Triple Display



In Retail Store, the traditional posters
will be replaced by electronic catalog. When
people line up waiting, they can see the photos,
discounting information and may get one more
clothe for that.



In Boutique, customers can watch the
fashion show, displaying on the wall, to get more
inspiration and buy more new dress

AIO POS

MARS-5443

Specification

System

Processor	Intel® Atom™ 330 Processor (1.6GHz)
FSB	533MHz
Chipset	Intel® 945GC GMCH and ICH7R
System Memory	1 x DDR2 Long-DIMM up to 2GB
Graphic Memory	Intel® 945GSE GMA950 Engine
Storage	1 x 160GB 2.5" SATA 300

Display

LCD Size	15" TFT LCD with LVDS interface
Brightness	Typical 250 cd/m ²
Maximum Resolution	1024 x 768
Title Angle	0-90°
Touch Screen	5-wire resistive type

Rear I/O

Serial Port	4 x Powered Serial Ports (5V/12V selectable) (One for Pole type VFD)
DC Jack	24V Power Input Connector & 24V Power Output Connector
Cash Drawer Port	1 x RJ11 (12V/24V selectable)
VGA	1 x D-sub 15pin connector for 2 nd display
HDMI	1 x HDMI connector
USB	2 x PC USB; 2 x 12V Powered USB; 1 x 24V Powered USB
LAN	1 x Gigabit Ethernet
Keyboard & Mouse	2 x 6-pin Mini-Din for Keyboard & Mouse

Front I/O

Power Button	1
Reset Button	1
LED Indicator	1 for Power; 1 for Storage Access
USB	2 x PC USB
Audio	Line-In/Line-Out/Mic-In
Speaker	2 x 2Watt

Power Adapter

Input Voltage	100-240VAC
Output Voltage	24V
Power	200Watts

VFD

0~90°

0~90° Title Angle

Touch Panel

Stylish Front I/O

Built in MSR

Hidden Rear I/O

Mechanical & Environment

	CE & FCC Class A
Operation Temperature	5°C-35°C
Storage Temperature	-20°C-55°C
Operation Humidity	10%-90% RH non-condensing
Storage Humidity	10%-90% RH non-condensing
Dimension	Monitor @ 90 degree: 334(H) x 374(W) x 358(D)mm Monitor @ 0 degree: 166(H) x 374(W) x 371(D)mm

MSR (Optional)

Magnetic Stripe Formats	100-240VAC
Track	24V

Customer Display (Optional)

Pole Type VFD	20 columns x 2 lines
---------------	----------------------

POS Board

Besides All-In-One POS System

and POS PC series, Portwell also dedicates to design different form-factor of motherboards for POS applications that create totally one-stop shopping for not only off-the-shelf products but also customized solutions to the market.



POS PC

Portwell PC POS series adopt Intel® latest ATOM saving, less noise but better performance solution contributes to the market with well ventilation, effective advantages.

PCS-8100



System

Processor	Intel® Atom™ 330 Processor (1.6GHz)
FSB	533MHz
Chipset	Intel® 945GC GMCH and ICH7R
System Memory	2 x DDR2 Long-DIMM up to 2GB
Graphic Memory	Intel® 945GC GMA950 Engine
Storage	1 x 3.5" SATA 300

Rear I/O

Serial Port	4 x Powered Serial Ports (5V/12V selectable)
DC Jack	24V Power Input Connector & 24V Power Output Connector
Cash Drawer Port	1 x RJ11 (12V/24V selectable)
Display	Dual VGA; HDMI (Optional)
USB	2 x PC USB; 2 x 12V Powered USB; 1 x 24V Powered USB
LAN	1 x Gigabit Ethernet
Keyboard & Mouse	2 x 6-pin Mini-Din for Keyboard & Mouse

Front I/O

Button	1 x Power Button, 1 x Reset Button
LED Indicator	1 for Power; 1 for Storage Access
USB	2 x PC USB
Audio	Line-In/Line-Out/Mic-In

Mechanical & Environment

Operation Temperature	0°C~45°C
Storage Temperature	-20°C~80°C
Relative Humidity	5%~95% non-condensing
Dimension	80(H) x 274(W) x 315(D)mm

Power Supply

Input Voltage	100~240VAC
Output Voltage	24V
Power	200Watts

PCS-9500



System

Processor	Intel® Atom™ 330 Processor (1.6GHz)
FSB	533MHz
Chipset	Intel® 945GC GMCH and ICH7R
System Memory	1 x DDR2 Long-DIMM up to 2GB
Graphic Memory	Intel® 945GC GMA950 Engine
Storage	1 x Compact Flash

Rear I/O

Serial Port	2 x Serial Ports; 6 x Powered Serial Ports (5V/12V selectable/Optional)
Display	1 x VGA; 1 x DVI
USB	4 x PC USB; 2 x 12V Powered USB
LAN	1 x Gigabit Ethernet
Audio	Line-In/Line-Out/Mic-In
Keyboard & Mouse	2 x 6-pin Mini-Din for Keyboard & Mouse

Mechanical & Environment

Operation Temperature	0°C~45°C
Storage Temperature	-20°C~80°C
Relative Humidity	5%~95% non-condensing
Dimension	360(H) x 263(W) x 66(D)mm

Power Supply

Input Voltage	90~264VAC, Full range
Output Voltage	Max. 12V, output is 7.5A
Power	100Watts

RUBY-9720VGAR

45nm Intel® Core™ 2 Quad processor based Micro-ATX Motherboard with Four DDR2 DIMM, DVI-I, VGA, Gigabit Ethernet, Audio and Optional Powered USB & Powered COM ports



- Intel® Core™ 2 Quad / Core™ 2 Duo processor
- Intel® Q45 and ICH10DO Chipset
- Four 240-pin DIMMs support dual channel DDR2 SDRAM up to 16GB
- Dual Display: VGA / DVI
- Optional Powered USB & Powered COM Ports via daughter board
- Support iAMT 5.0 and iTPM
- Six SATA-300 ports, support RAID0, 1, 5, 10

PEB-9737VGA

Intel® GM45 platform based POS board with dual DDR3 SO-DIMMs, VGA, Gigabit Ethernet, Audio, USB, Powered USB and eSATA



- Intel® Mobile Core™ 2 Duo and Celeron® M 575/585 Processor
- Intel® GM45 and ICH9M-E Chipset
- Latest DDR3 Technical with lower working voltage and higher density for more memory requirement
- HDMI port brings cost effective and easy to use for large size LVD TV connection with multimedia applications
- Optional Powered USB (5V & 12V) brings flexible for POS peripheral connections
- On board Mini-PCI Express connector for platform wireless solution connection

™ platform which deliver customer more power
ons. The advanced mechanical design also
light weight as well as competitive cost

PCS-9200



System

Processor	Intel® Atom™ N270 Processor (1.6GHz)
FSB	533MHz
Chipset	Intel® 945GSE GMCH and ICH7-M
System Memory	1 x DDR2 SO-DIMM up to 2GB
Graphic Memory	Intel® 945GSE GMA950 Engine
Storage	1 x Compact Flash or 1 x 2.5" SATA 300

Rear I/O

Serial Port	4 x Powered Serial Ports (5V/12V selectable)
DC Jack	12V Power Input Connector
Cash Drawer Port	1 x RJ11 (12V/24V selectable)
Display	1 x VGA
USB	2 x PC USB
LAN	2 x Gigabit Ethernet
Audio	2W Audio Amplifier for Line-Out
Keyboard & Mouse	Header
Power Button	1 x Power Button
Reset Button	1 x Reset Button
LED Indicator	HDD LED, Power LED

Mechanical & Environment

Operation Temperature	5°C~35°C
Storage Temperature	-20°C~55°C
Relative Humidity	5%-95% non-condensing
Dimension	65(H) x 210(W) x 150(D)mm



WADE-8057

Intel® Atom™ 330 1.6GHz Dual Core™ Processor based Mini-ITX Board with dual display, Gigabit Ethernet, Three SATA Ports, Four COM ports and Six USB Ports



- Intel® Atom™ 330 1.6GHz Dual Core Processor
- Intel® 945GC and ICH7 Chipset
- One 240-pin DIMM support single channel DDR2 SDRAM up to 2GB
- Dual Display: VGA/DVI
- One PCI expansion slot
- Three SATA Ports, One Compact Flash socket and One IDE connector

PEB-2131VGA

3.5" Embedded size, Based on Intel® Atom™ N270 Processor with DDR 2 SDRAM, VGA/LVDS, Dual Display, Gigabit Ethernet and Audio



- The Intel® Atom™ N270 and 945GSE platform that provides cost effective solution technology
- SATA and CF interface provide best cost effective storage for market
- Support one SODIMM socket and up to 2GB memory size
- Support mini-PCI Express interface for wireless connection
- Dual Gigabit Ethernet (10/100/1G) with RJ-45 connector
- High Definition audio with 2-channel amplifier@6W
- Power COM ports and cash drawer GPIO for POS Application

Your Domain, Matters!

VMS (Vertical Market Service)

is dedicated to supporting POS, Gaming, IVI, Lottery, and Medical market from board level to system level and always helps customers develop reliable equipments. Humming bird is the representative symbol to show the four features of VMS, Speed, Focus, Precision and Flexibility.

VMS Domain

What is VMS, advantage OEM/ODM Service



Global Support

Worldwide office in the U.S.A, Taiwan, Japan, China, Netherland, United Kingdom, and India.

Faster Time-to-Market

Portwell experienced engineers, complete product solution, Global operation and flexible business service help reducing your new product introduction cycle.

State-of-the-Art Technology

Cooperating POC(Proof of Concept) and EA(Earlier Access) product with Intel, Portwell has strong design ability and state-of-Art-technology.



E225800



Portwell, Inc. (Headquarters)

4F, No. 186, Jian-Yi Rd., Chung-Ho City,
235 Taipei, Taiwan
Tel: +886-2-77318888
Fax: +886-2-82271109
E-mail: info@portwell.com.tw
<http://www.portwell.com.tw>

American Portwell

Fremont Tel: +1-510-403-3399
Norcross Tel: +1-510-403-3399
E-mail: info@portwell.com
<http://www.portwell.com>

Portwell Japan, Inc.

Tokyo Tel: +81-3-5298-8071
Osaka Tel: +81-6-4807-7721
E-mail: info@portwell.co.jp
<http://www.portwell.co.jp>

Beijing Portwell

Beijing Tel: +86-10-82701616
Shanghai Tel: +86-21-3222-0505
Shenzhen Tel: +86-755-8621-7695
E-mail: info@portwell.com.cn
<http://www.portwell.com.cn>

Portwell-Laxsons India

Tel: +91-22-2685-9911
E-mail: info@portwellaxsons.com
<http://www.portwellaxsons.com>

Portwell, B.V.

Tel: +31-252-620790
E-mail: info@portwell.nl
<http://www.portwell.nl>

Portwell (UK) Ltd.

Tel: +44(0)1235-750760
E-mail: info@portwell.co.uk
<http://www.portwell.co.uk>

M090522