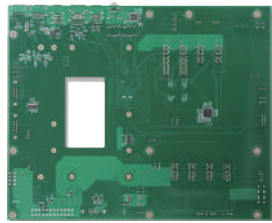
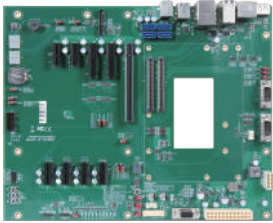


PCOM-C60B

ATX Form Factor Evaluation Carrier Board for Type 6 Com-Express® Rev 3.0 Module



FEATURES

- COM Express® carrier board is compatible with the Portwell Type 6 COM Express® modules
- Support 4x USB 3.2, 8x USB 2.0, 4x SATA III Ports
- Support multiple displays(eDP, DP, VGA, LVDS)
- Support 1x PEG(Gen4), 2x PCIe 4, 6x PCIe x1, 2.5G Ethernet



Portwell PCOM-C60B is designed as a validation board for most of the Portwell COM-Express 3.0 type 6 modules, this carrier will support VGA, eDP/LVDS, DP displays, and included multiple I/O expansions, for example PEG, PCIe, USB3.2, SATAIII and 2.5G ethernet.

General

Product	PCOM-C60B
Form Factor	Type6, ATX (305 X 244mm)
Processor	Depends on Module
Core	
Freq.	
Turbo	
Cache	
Processor Graphics	
Graphics Base Frequency	
Graphics Max Dynamic Frequency	
HW Encoding	
HW Decoding	
HW Acceleration	
Processor TDP	
BIOS	
ECC Memory Supported	
Memory	

I/O Interface

SATA	4x SATA III		
USB	4x USB 3.2 Gen2 8x USB 2.0 / 1 OTG		
Ethernet	1x GbE (1G/2.5G)		
Serial I/O	GPIO	8 bit GPIO	
	I ² C	base on module design	
	SMBus	base on module design	
	UART	2 x Serial Port (Tx/Rx)	
PEG	1x PCIe x16 (Gen4)		
PCI Express	2 x PCIe x 4 6 x PCIe x 1		
Display	Default	Options	Resolution
	VGA	VGA	Depends on module
	LVDS	24bit dual channel LVDS	
		eDP	
	DDI0	DP	
	DDI1	DP	
DDI2	DP		
Security	Depends on module		

MECHANICAL & ENVIRONMENT

Dimension	305 X 244mm
Power DC IN	Support ATX power supply
Storage Temperature	-40°C to 80°C
Operation Temperature	-40°C to 80°C
Certification	Contact us
MTBF	Over 100,000 hours ar 40°C
Vibration	Contact us
OS	Depends on Module

ORDERING GUIDE

Product	Ordering P/N	Status
PCOM-C60B	AB1-3G22Z	In Development

Accessory	Ordering P/N	Status
LVDS Cable	TBD	In Development
eDP Cable	TBD	In Development

BLOCK DIAGRAM

PCOM-C60Bzr4

COM Express Type 6
Carrier Board

ATX Form
Factor

-40 ~ +80° C

